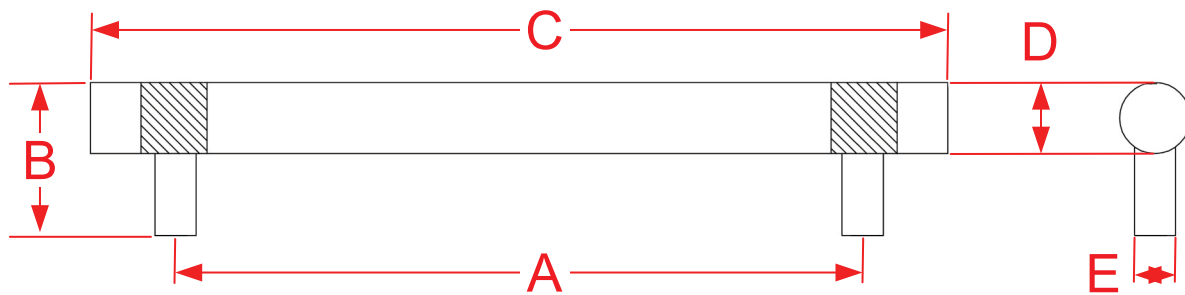


# 545, 546, 547 & 566 Series Cabinet, Shower, Door & Appliance Pulls

Finishes for Life  
TARNISH-FREE GUARANTEED



Part #	A Center to Center	B Projection	C Overall	D Diameter	E Base
545-4	4.0000"	1.1875"	5.0000"	0.5000"	0.3125"
545-5	5.0000"	1.1875"	6.0000"	0.5000"	0.3125"
545-6	6.0000"	1.1875"	7.0000"	0.5000"	0.3125"
545-8	8.0000"	1.1875"	9.0000"	0.5000"	0.3125"
Custom sizing available up to 25" overall					
546-4	4.0000"	1.4375"	5.5000"	0.6250"	0.3750"
546-6	6.0000"	1.4375"	7.5000"	0.6250"	0.3750"
546-8	8.0000"	1.4375"	9.5000"	0.6250"	0.3750"
546-10	10.0000"	1.4375"	11.5000"	0.6250"	0.3750"
Custom sizing available up to 31 1/2" overall				Page 1 of 2	



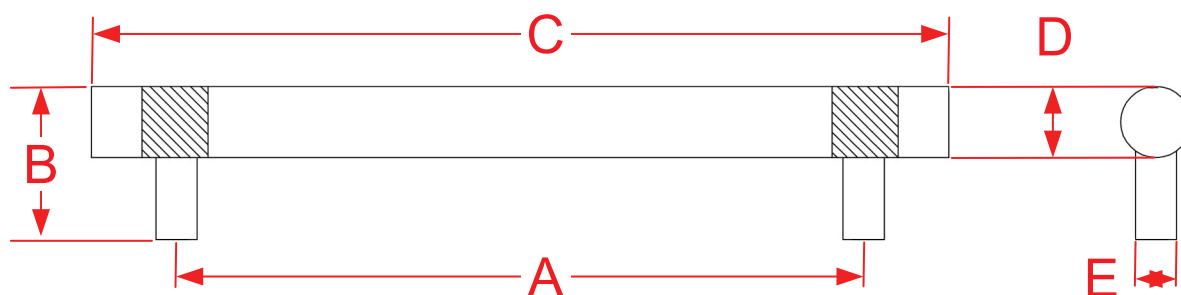
Manufacturing Fine Architectural Hardware  
in the USA Since 1927



Copyright 2015  
Colonial Bronze Company  
All rights reserved  
[www.colonialbronze.com](http://www.colonialbronze.com) -  
860.489.9233

# 545, 546, 547 & 566 Series Cabinet, Shower, Door & Appliance Pulls

Finishes for Life  
TARNISH-FREE GUARANTEED



Part #	A Center to Center	B Projection	C Overall	D Diameter	E Base
547-6	6.0000"	1.5625"	8.0000"	0.7500"	0.5000"
547-8	8.0000"	1.5625"	10.0000"	0.7500"	0.5000"
547-10	10.0000"	1.5625"	12.0000"	0.7500"	0.5000"
547-12	12.0000"	1.5625"	14.0000"	0.7500"	0.5000"
Custom sizing available up to 32" overall					
566-10	10.0000"	2.1250"	14.0000"	1.0000"	0.6125"
566-12	12.0000"	2.1250"	16.0000"	1.0000"	0.6125"
566-18	18.0000"	2.1250"	22.0000"	1.0000"	0.6125"
566-24	24.0000"	2.1250"	28.0000"	1.0000"	0.6125"
Custom sizing available up to 32" overall				Page 2 of 2	



Manufacturing Fine Architectural Hardware  
in the USA Since 1927



Copyright 2015  
Colonial Bronze Company  
All rights reserved  
[www.colonialbronze.com](http://www.colonialbronze.com) -  
860.489.9233