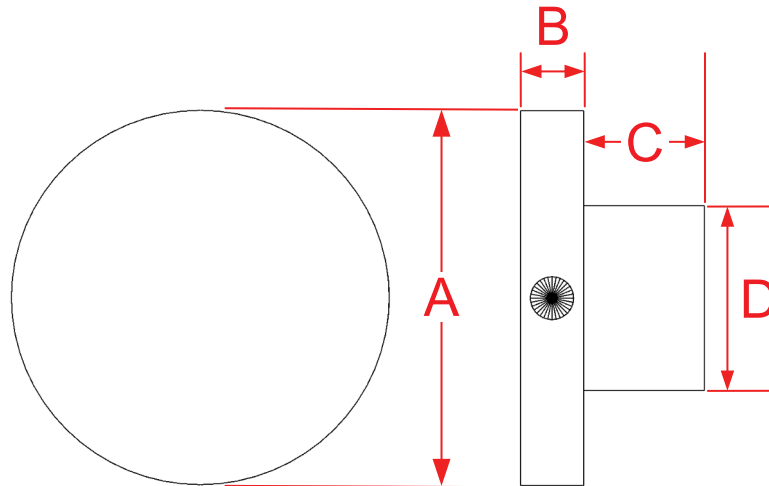


9147, 9148, 9149, 9150, 9151, 9152, 9153, 9154, 9155 and 9156 Finished Cap Screws

Finishes for Life
TARNISH-FREE GUARANTEED



Part #	A Diameter	B Projection	C Shank Depth	D Shank Width	Screw Size
9147	0.6250"	0.1250"	0.2400"	0.3750"	8-32 x 3/4"
9148	0.6250"	0.1250"	0.2400"	0.3750"	1/4-20 x 1"
9149	1.2500"	0.1250"	0.2400"	0.3750"	8-32 x 3/4"
9150	0.7500"	0.1250"	0.2400"	0.3750"	1/4-20 x 1"
9151	1.5000"	0.1250"	0.2400"	0.3750"	8-32 x 3/4"
9152	1.5000"	0.1250"	0.2400"	0.3750"	1/4-20 x 1"
9153	1.0000"	0.1250"	0.2400"	0.3750"	1/4-20 x 1"
9154	1.0000"	0.1250"	0.2400"	0.3750"	8-32 x 3/4"
9155	1.2500"	0.1250"	0.2400"	0.3750"	1/4-20 x 1"
9156	0.7500"	0.1250"	0.2400"	0.3750"	8-32 x 3/4"
Custom Sizing Available					



Manufacturing Fine Architectural Hardware
in the USA Since 1927



Copyright 2024
Colonial Bronze Company
All rights reserved
www.colonialbronze.com
860.489.9233